



ROYAL NORTH OF IRELAND
YACHT CLUB

GP14 WORLD CHAMPIONSHIPS

8TH - 14TH AUGUST 2026



RNIYC 2026
GP14 WORLD
CHAMPIONSHIPS



HOSTED BY
ROYAL NORTH OF IRELAND YACHT CLUB
8TH - 14TH AUGUST 2026

RNIYC.ORG

[f /RNIYC](https://www.facebook.com/RNIYC)

CONTENTS

WELCOME	3
VENUE	4
SAILING AREA	5
TRAVELLING TO RNIYC	6
LOCAL ACCOMODATION & AMENITIES	10
SOCIAL	12
INFORMATION	13
PERSONNEL	14

WELCOME

We are delighted to welcome you to the Royal North of Ireland Yacht Club.

This brochure contains all the information required for your travel to, accommodation during and social events while you're here with us for the event.

On behalf of the Royal North of Ireland Yacht Club, we'd like to wish you a pleasant stay and every success in the event.



Gerry Reid
Event Director



VENUE



Racing at the historic Royal North of Ireland Yacht Club (RNIYC) has taken many guises through the decades. We have one of the oldest one design fleets still racing regularly in the fairy class, This fleet arrived at the club in 1902, twelve are ‘on the go’ currently at RNIYC and are as competitive as ever. In the past, we have started iconic fleets in this part of the world, with Dragons, Squibs, and more recently the RS class. In the last few years RNIYC has been delighted to see the resurgence of the GP14 class, we gave this our full support, and ran a successful spring series exclusively for the GP14 fleet with 22 boats entered. This is building year on year and is now being seen as a must do part of the racing calendar.

SAILING AREA

The chart shows the proposed race areas. Each circle is 1.5 nautical miles in diameter. Race area A would be preferred unless the wind is offshore, in which case we could use race area B. Between the two, all wind directions are covered and 1.5 mile beats can be set. Both areas are about 2 miles from the moorings. If required the third alternative (area C) could be used in conditions where a strong easterly sea breeze is expected, and it would have the potential for a longer beat.

The prevailing wind is from the south west. There should be no significant topographical influence, because the course can be moved to the other side of the lough if the wind is offshore.

The tide in Belfast Lough ebbs to the north and has a range of around 3.60m

at springs. There is no depth restriction in the Lough. Typically there is a nominal 6m depth in the race areas at low tide and approximately 10m at high tide. The tidal current is a maximum of about 1.5 knots and is straight forward, in and out. There are no local eddies in the race areas.

“ The best sailing area we’ve seen for a very long time. ”



TRAVELLING TO RNIYC

Geographically the Royal North of Ireland Yacht Club is situated in the North East quadrant of the island of Ireland. The nearest population centre is the city of Belfast approximately 4 miles and Bangor only 7 miles away.

The Port of Belfast has major freight and passenger facilities. Roll on/roll off freight and passenger ferries connecting with England and Scotland with several shipping companies operating the various routes on scheduled daily timetables. Container freight facilities have worldwide connections. Other roll on/roll off ferries operate to the ports of Larne, approximately 25 miles, Warrenpoint approximately 45 miles and Dublin approximately 100 miles away. The roads from each of the locations listed are a combination of motorway and dual carriageway.

Stena Line
T: 028 9074 7747
stenaline.co.uk

P&O Irish Sea
T: 0870 2424 777
poferries.com



Northern Ireland has three commercial airports and two of these serve Belfast. The local airport is George Best Belfast City Airport which is only 10 minutes' drive from the Yacht Club, providing services throughout the British Isles and to Europe. Belfast International Airport is an easy 20 miles drive by motorway and dual-carriageway. Direct scheduled flights connect Belfast International Airport to Europe as well as to Great Britain and the rest of Ireland.

THE LIST OF CARRIERS FROM BOTH THESE AIRPORTS IS AS FOLLOWS:

George Best Belfast City Airport
T: 028 9093 9093
belfastcityairport.com

Airlines

Loganair
loganair.co.uk
T: 0344 8002055

British Airways
britishairways.com
T: 0844 8484888

Aer Lingus
aerlingus.com
T:0871 7182020

Car hire at Belfast City Airport

Avis
avis.co.uk/belfast
T:0844 5446028

Europe Car
euopecar.co.uk
T: 0871 3843425

Budget
budget.ie
T: 028 90451111

Hertz
hertz.co.uk
T: 028 90732451

National Car Rental
nationalcar.co.uk/belfast
T: 0871 3843425

Belfast International Airport
T: 028 9448 4848
belfastairport.com

Airlines

Easyjet
easyjet.com
T: 0843 1045000

Jet2.com
jet2.com
T: 0871 2261737

Car hire at Belfast International

Enterprise
enterprise.co.uk
T: 028 94451940

Budget
budget.ie
T: 028 9442332

Hertz
hertz.co.uk
T: 028 94422533

National Car Rental
nationalcar.co.uk/belfast
T: 028 94422285

Europcar
europcar.com
T: 028 94422285

Indirect scheduled flights from both Belfast airports afford passengers worldwide connections through hubs such as Heathrow, Gatwick, Manchester Birmingham, Glasgow etc. International air freight is also handled at Belfast International Airport.

BY ROAD

The RNIYC lies in the Borough of North Down which lies along the A2 Belfast-Bangor Road.

RNIYC is 4 road miles (6km) from Belfast
RNIYC is 64 miles (103km) from Derry/L’Derry
RNIYC is 111 miles (168km) from Dublin
RNIYC is 247 miles (400km) from Shannon

Getting Around North Down

Bus/Rail Timetable Enquiries
T: 028 9066 6630
translink.co.uk

Bangor’s Ulsterbus & NI Rail Station is in Abbey Street.

Local Car Hire

Local car & van hire companies
Enterprise
T: 028 9146 1616

Taxis

Radio-controlled taxi services operate throughout North Down and are contacted by phone. Minimum Fare £3.

- Hollywood Taxis** (Fonacab local)
T: 028 9042 8812
- Value Cabs**
T : 028 90809080
- Bangor Cabs**
T: 028 9145 6456
- Galaxy Cabs**
T: 028 9147 1444 or 028 9145 6789
- LA Cabs**
T: 028 9127 0848
- North Down Cabs**
T: 028 9147 0777
- Premier Taxis**
T: 028 9145 6781
- Kare Kabs**
T: 028 9145 6777



DIRECTIONS

The Club house is located half way between Belfast and Bangor on the shores of Belfast Lough just outside Holywood.

From M1 Motorway

Heading North on the M1 to Belfast continue seamlessly along the Westlink dual carriageway (A12) for 2 miles past all the exit ramps until you get to a major junction with traffic lights. (You need to be in the right hand lane approaching the junction to peel off on the right, just watch the overhead signs for the M3 City Airport and Bangor) where you take the M3 to the Lagan Bridge. You will need to feed off the ramp and change lanes by moving to the right.

The M3 bridge leads quickly on to the A2 dual carriageway road (follow the signs for Bangor). You will pass the Belfast City Airport on your left and then you come to Tillysburn Junction. Continue straight through the lights still heading for Bangor (the large Tesco will be on your right).

After approximately 1.75 miles from the Tillysburn junction you will reach the first of three sets of traffic lights as you bypass Holywood town centre. After these lights watch out for the Maxol Filling Station on the left at a fourth set of traffic lights. There is one small road on the left at the lights, pass this and take the next road on the left - Cultra Avenue, this is just after the dual carriageway ends. Continue down this road until you reach the sea. RNIYC will be on your right.

If you miss the turn and find yourself driving along a 4 lane single carriageway road and get as far as another set of traffic lights approaching the Culloden Hotel you can turn left at these lights then left at the fork in the road and this will bring will bring you down to the seafront. Follow the road as it swings left along the shore and RNIYC will be at the end on your left.

From M2 Motorway

When coming on the M2 stay in the right hand lanes on the long straight 4 and 5 lane section approaching Belfast to get on to the M3 motorway (watch the overhead signs). Once in the 50mph speed limit you rise on to a bridge over the River Lagan. Once on the M3 bridge... see previous info 'from M1 Motorway'.

From Further Afield

The port of Belfast is only 6 miles from the Club and it has car ferry links with Cairnryan and Liverpool. Other car ferry routes are available from Larne to Cairnryan, Dublin to Holyhead and Dublin to Liverpool. Larne is about 40 minutes (25 miles) away and Dublin is now only about 2 hours (110 miles) from the club. The road from Dublin has been upgraded over the past decade and is now motoway or dual carriageway all the way. For those flying from GB there are daily flights from most major airports to Belfast City Airport which is only a 10 minute drive from the club. There are also many daily flights from Belfast International Airport (30 minutes away) which adds to the options available.



FERRY TIMETABLES

N.B. Please check with local operator as times are subject to changes.

OUTBOUND TO IRELAND	DEPARTS	ARRIVES
PEMBROKE - ROSSLARE (IrishFerries.com) 00448717300400	0245 1445	0645 1845
HOLYHEAD - DUBLIN Cruise Ferry Dublin Swift Fast Ferry Cruise Ferry Fast Ferry	0240 1150 1410 1715	0555 1339 1725 1915
HOLYHEAD - DUBLIN (Dublin Port)	0230 0820 1350 2130	0545 1135 1705 0045
LIVERPOOL - DUBLIN (P&O Ferries) 08716642121	2130	0500
LIVERPOOL - BELFAST (Day Sailing) (Stenaline Overnight) 0845 0704000	1030 2230	1830 0630
CAIRNRYAN - BELFAST (Stenaline) 0845 0704000	0730 1130 1530 1930 2330	0945 1345 1745 2145 0145
CAIRNRYAN - LARNE (P&O Ferries) Shortest Crossing 08716 642121 Superfast	0400 0730 1030 1255 1630 2000 2359	0600 0930 1230 1355 1830 2200 0200

INBOUND TO IRELAND	DEPARTS	ARRIVES
ROSSLARE - PEMBROKE (IrishFerries.com) 00448717300400	0845 2045	1245 0045
DUBLIN - HOLYHEAD Cruise Ferry Dublin Swift Fast Ferry Cruise Ferry Fast Ferry	0805 0845 1430 2055	1130 1045 1630 0020
DUBLIN - HOLYHEAD (Dublin Port)	0215 0820 1600 2115	0530 1145 1915 0040
DUBLIN - LIVERPOOL (P&O Ferries) 08716642121	0300	1030
BELFAST - LIVERPOOL (Day Sailing) (Stenaline Overnight) 0845 0704000	1030 2230	1830 (Ex Mon) 0630
BELFAST - CAIRNRYAN (Stenaline) 0845 0704000	0730 1130 1530 1930 2330	0945 1345 1745 2145 0145
LARNE - CAIRNRYAN (P&O Ferries) Shortest Crossing 08716 642121 Superfast	0730 1300 1500 1630 2000 2300	0930 1500 1600 1830 2200 0100

LOCAL ACCOMMODATION AND AMENITIES

ACCOMMODATION

The area surrounding RNIYC and the nearby towns of Holywood (1 mile) and Bangor (7 miles) and the city of Belfast (4 miles) provide a range of accommodation options including self-catering, guest houses and hotels to suit all tastes and budgets.

The North Down Borough Council's Tourist Information Centre have agreed to partner the Club in dealing with accommodation information and bookings in the run up to the event and can supply full lists of all accommodation and leisure activities available. www.northdowntourism.com

Full list of Hotel, Guesthouse, Bed & Breakfast and Self-Catering accommodation available from: www.visitardsandnorthdown.com/where-to-stay

There are also several options available to those looking for squad or group accommodation:

The Girl Guides Centre at Lorne Estate is also located near RNIYC. This facility can be block-booked and is ideal for a team base. Accommodation is available within several buildings on the estate, with an overall capacity for 95. Lorne is within walking distance of the Club, along the coastal path. It is completely self-contained and offers a variety of outdoor activities including archery, climbing tower, a high wire course and bungee trampolining. Full details available from: www.girlguiding.org.uk/activity_centres/other_centres/lorne.aspx Also within walking distance is the

Ulster Folk and Transport Museum. The Museum's residential center, situated within the recreated Victorian town, offers group accommodation in various sized rooms for up to 75 visitors. www.discovernorthernireland.com/Ulster-Folk-and-Transport-Museum-Residential-Centre-Holywood-P9913

Slightly further along the coast (2.5miles) further accommodation may be found at **Rockport School:** www.rockportschool.com/the-hub/holiday-lets

Camping and Caravans
There is limited camping and campervan space available in the Club grounds and at Lorne.

We have an additional large camping area a three-minute walk from the club house if required.

The full facilities of the Club are accessible at all times. Dependent on numbers Campervans may be parked within RNIYC grounds.



AMENITIES

All usual amenities are available in the immediate area including filling stations, ATMs, chandlers, dentist, doctor's surgery, hospital, taxis, supermarkets, restaurants and take-aways, pubs, leisure centre, and shopping.

Well-stocked shops and ATM's are available within a ten minute walk from the Club.

ATM
Nearby convenience stores and Holywood Town Centre

Bank
Ulster Bank, Bangor Town Centre

Chandlery
Bosun Bobs, Bangor Marina
7 Quay Street
T:02891229532

Chemist
Boots / Sweeney's
Holywood Town Centre

Hospital
Ulster Hospital (6 miles)
T:028 9048 4511
www.setrust.hscni.net

Laundry
Bangor Town Centre

Supermarket's
Tesco / Centra
Holywood Town Centre

Swimming Pool
Bangor Aurora Aquatic and Leisure Complex



SOCIAL

At RNIYC we have earned the reputation for hosting successful events both on and off the water, the majority of our visitors appreciate the relaxed atmosphere in the Club and the facilities we have to offer.



ENTERTAINMENT

SUNDAY 9TH

No racing.
Complimentary welcome supper.

MONDAY 10TH

First day of racing.
Commodore’s reception.
Italian evening with late bar.
Daily prize giving at 7pm.

TUESDAY 11TH

Day 2 of racing.
Evening in Belfast – food and late bars!
Transport from Club and back from Belfast provided. Or evening BBQ at Lorne / Event Village.
Daily prize giving at 7pm.

WEDNESDAY 12TH

Day 3 of racing.
Chill out evening.
Food available in Club if required.
Daily prize giving at 7pm.

THURSDAY 13TH

Day 4 of Racing.
Gala dinner and late bar.
Daily prize giving at 7pm.

FRIDAY 14TH

Last Day of racing.
Prize giving, food available and late bar.

N.B. Social plan may vary slightly.

DINING

Breakfast rolls, tea and coffee each morning before sailing.
Pack lunches for on water available.
Bar food immediately after sailing.

INFORMATION

EVENT DATES

8th – 14th August 2026.

Saturday 8th Arrival: Registration and measurement.

Monday 10th – 14th August: Racing

RNIYC CONTACT

Leigh Anderson T:028 9042 8041

NOTICE OF RACE

Available January 2026:
Details relating to the notice of race can be found at the following links:
www.rniyc.org
www.gp14.org

ENTRY FORM

Available January 2026:
Entry for this even can be completed using the online form at the following links:
www.rniyc.org
www.gp14.org

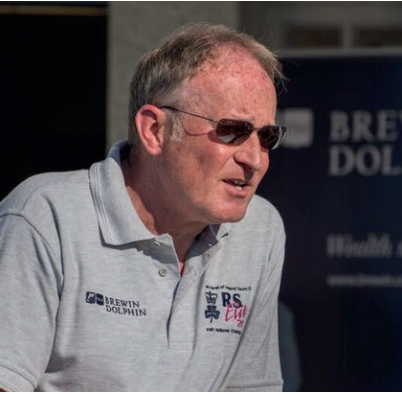
SAILING INSTRUCTIONS

Details of the sailing instructions can be downloaded from the following links:
www.rniyc.org
www.gp14.org

Contact:
GP14 (Andy)
E: johnstna@gmail.com



CONTACTS



EVENT DIRECTOR
Gerry Reid



COMMODORE
Jonathan Millar



PRO
Ruan O'Tiarnaigh



RESCUE DIRECTOR
Frank Haslett



BEACH MASTER
Kevin Baird



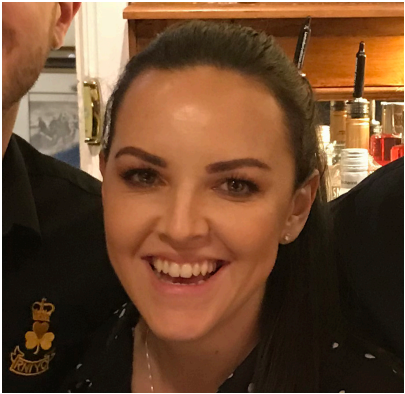
GP14 IRELAND
Andrew Johnson



CLUB MANAGER
Leigh Anderson



BAR MANAGER
Roger Lees



CATERING MANAGER
Christine Corran





ROYAL NORTH OF IRELAND YACHT CLUB

ROYAL NORTH OF IRELAND YACHT CLUB
7 Seafront Road, Cultra, Holywood, Co. Down, Northern Ireland, BT18 0BB
rniyc.org